

2 0 1 4

ORANGE COUNTY IN TREATMENT



ORANGE COUNTY HEALTH CARE AGENCY
BEHAVIORAL HEALTH SERVICES



Behavioral Health Substance Use Disorder Services administers alcohol and other drug prevention, treatment, and recovery services in Orange County. BHS Substance Use Disorders (SUD) works in partnership with California Department of Alcohol and Drug Programs (ADP) to reduce alcoholism, drug addiction, and problem gambling in OC. The following data come from California Outcomes Measurement System – Treatment (CalOMS-Tx) for Orange County, which collects client demographics and outcome data.

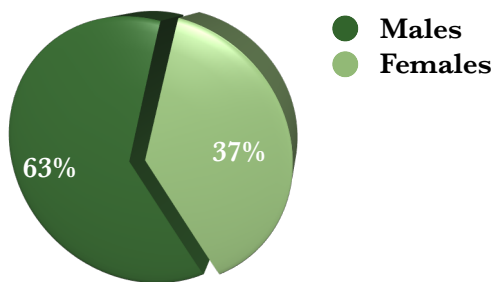
KEY FINDINGS OF THE STUDY INCLUDE:

From January 2011 through December 2013, there were 17,190 admissions to BHS treatment to those with substance use disorders. The number of unduplicated clients admitted to treatment was 11,405.

The following summary provides information obtained from client admission records to non-residential/outpatient and residential (31+ day) treatment programs. Thus, the total used for the admissions graphs is 12,586 or an average (avg) of 4,195 admissions per year (some clients may have more than one admission).

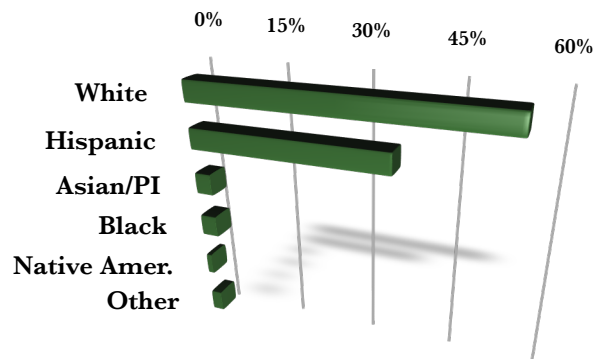
CLIENT DEMOGRAPHICS

On average, 63% of admissions were male (avg=2,657/yr) and 37% female (avg=1,536/yr) over the 3-year period. About two clients per year were transgender.

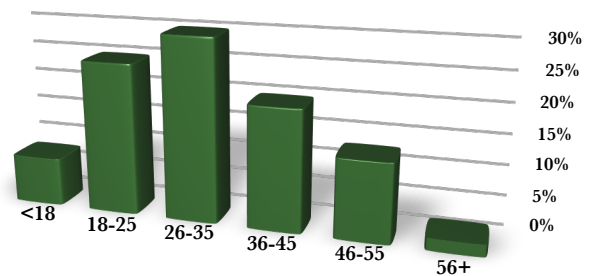


Over half of all admissions (55%) were to non-Hispanic Whites, followed by 36% Hispanic. Asian/Pacific Islanders accounted for about 3% and African

American/Black 3%. Multi-race/other combined for 3%, and American Indian/Alaskan Native about 1% of all admissions.



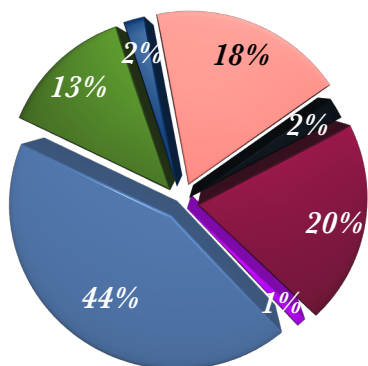
The majority of admissions (76%) were adults aged 18-45 years. Teens made up about 8% of admissions, while 46-55 year olds accounted for 13%. Adults 56 years and older made up only 2% of all admissions between 2011 and 2013.



Please go to www.ochhealthinfo.com/behavioral/adas/outcomes to download a copy of the full report.

The majority of all admissions (77%) were to clients who had some criminal justice involvement, with most (65%) being on AB 109 or other probation supervision.

The primary drug of choice for almost half (44%) of admissions was methamphetamine. Heroin was the drug of choice for 20% and other Opioids 2%. Alcohol accounted for 18%, Marijuana 13%, and Cocaine/Crack was the drug for 2% of admissions.



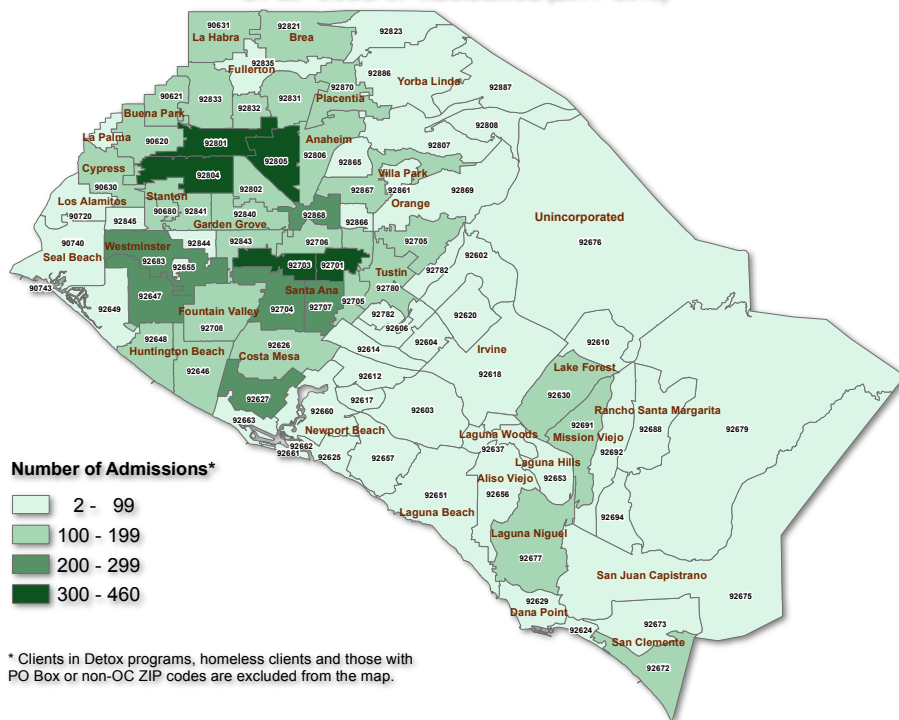
- Methamphetamine
- Cocaine/Crack
- Other Opioids
- Other
- Marijuana
- Alcohol
- Heroin

TREATMENT OUTCOMES

Matched admission/discharge pairs were extracted from the data set for over 8,200 adults (18+). Adults in SUD treatment showed improvement in all life domains. For example, the number of adults using drugs or having criminal justice involvement at discharge decreased compared to when they started treatment. More clients were employed and engaged in social support services that help them maintain their sobriety. Clients also reported less family conflict, fewer health problems, and fewer ER or hospital visits.

LIFE DOMAIN	OUTCOME	% CHANGE
DRUG USE	No Drug Use Past Month	+53%
	Used 1-20 days	-44%
	Used 21+ days	-72%
CRIMINAL INVOLVEMENT	Arrested	-65%
	In Jail	-74%
	In Prison	-78%
SOCIAL & ECONOMIC	Serious Family Conflict	-52%
	Used social support	+32%
	Employed	+107%
MEDICAL & HEALTH	Emergency Room Visit	-32%
	Hospital Stay	-42%
	Had Health Problems	-37%

DISTRIBUTION OF RECIPIENTS OF ALCOHOL & DRUG ABUSE SERVICES BY ZIP CODE OF RESIDENCE (2011- 2013)



GEOGRAPHIC DISTRIBUTION OF SUD CLIENTS

A geographic analysis of the ZIP code of residence of all Substance Use Disorder (SUD) clients showed that admissions were concentrated in the central, western, and northern regions of the county. The largest proportion of clients (33% of all admissions) lived in ZIP codes in Santa Ana (18%) and Anaheim (15%), while 7% of the admissions were from Huntington Beach, 6% each from Garden Grove and Orange, and 5% each from Fullerton and Costa Mesa. Among the south county cities, residents from Lake Forest, Laguna Niguel, Mission Viejo and San Clemente together accounted for 9% of all admissions. Notably, 23% of admissions to homeless clients were excluded from the geographic analysis.