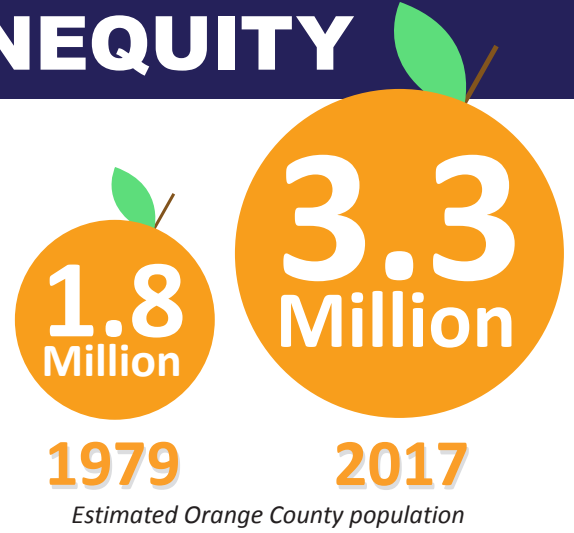




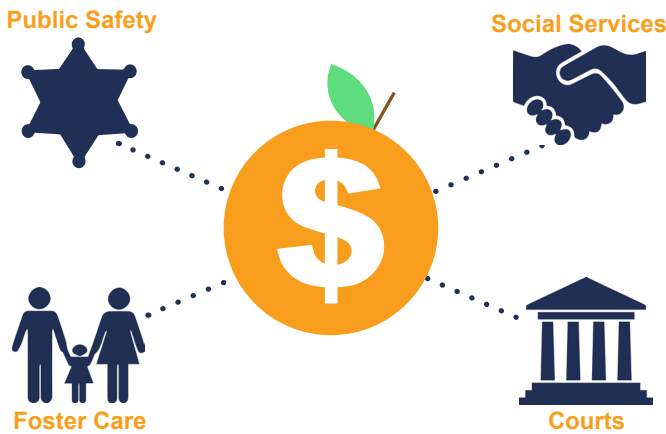
# PROPERTY TAX INEQUITY

## HOW DID WE GET HERE?

In 1979, Assembly Bill 8 set the formula for each California county's property tax allocation based on population. Since that time, Orange County's population has nearly doubled but Orange County's property tax allocation has not changed.



## PROPERTY TAX FUNDS OUR MOST CRITICAL SERVICES



Orange County contributes more and receives less than our peer counties. This structural inequity disadvantages our residents who rely on the County to provide critical services.

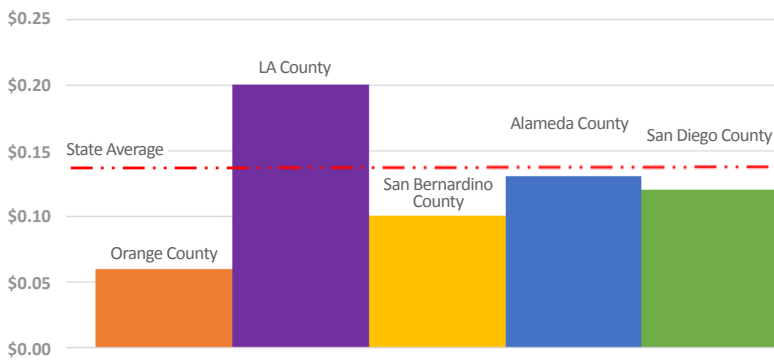
**\$966.5 MILLION MORE**

**\$475.1 MILLION LESS**

Orange County contributes approximately \$966.5 million MORE annually in funding to the State than the average of the top 15 counties.

Orange County receives \$475.1M LESS each year than commensurate funding received by peer counties.

## ORANGE COUNTY RECEIVES THE LOWEST PROPERTY TAX REVENUE OF ALL 58 COUNTIES

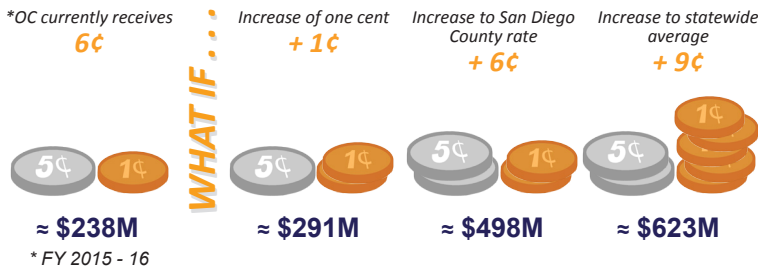


## OC's DOLLAR DIVIDED



## AN EQUITABLE SOLUTION

Additional funding will allow Orange County to provide vital programs and services that will benefit the most vulnerable in our community.



- HOMELESS SERVICES** - additional shelter options and resources
- CRISIS TREATMENT** - Stepping Up initiative and services for mentally ill
- JUVENILE PROGRAMS** - targeted programs reaching at-risk youth
- PUBLIC SAFETY** - increased law enforcement presence in the community