

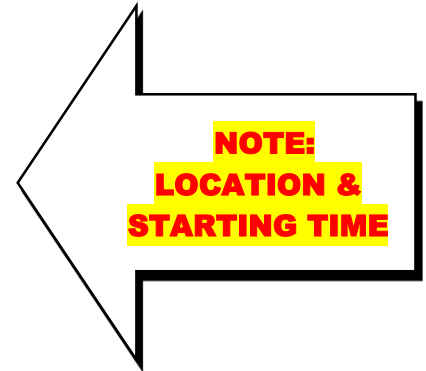


ORANGE COUNTY
 WORKFORCE INVESTMENT BOARD
 1300 S. GRAND AVENUE, BLDG. B, 3RD FLOOR
 SANTA ANA, CA 92705-4407
 PHONE: (714) 480-6500 FAX: (714) 834-7132

Orange County Workforce Investment Board
Service Delivery and Performance Committee

April 14, 2016
1:00 PM

Orange County One-Stop Center
Garden Grove Conference Room (2nd Floor)
7077 Oranewood Ave.
Garden Grove, CA 92841



AGENDA

CALL TO ORDER

The agenda contains a description of each item to be considered. No action will be taken on items not appearing in this agenda.

PUBLIC PARTICIPATION

Members of the public may address the Service Delivery and Performance Committee on items listed within this agenda so long as the subject matter is within the jurisdiction of the Committee.

1. **MINUTES** **ACTION**
 The minutes of the July 9, 2015 Service Delivery and Performance Committee meeting will be presented for review and approval.
2. **ONE-STOP FUNDING RECOMMENDATIONS FOR PY 2016-17** **ACTION**
 One-Stop System funding recommendations for Program Year 2016-17 will be presented for review and approval.
3. **SUBSCRIPTION WITH FUTUREWORK SYSTEMS** **ACTION**
 Information regarding the subscription with Future Work Systems will be presented for review and approval.
4. **WIOA PERFORMANCE REPORTS** **INFORMATION**
 Staff will present the WIOA Performance Reports for all programs for the period ending February 29, 2016.

5. PROGRAM FUNDING EXPENDITURE REPORTS **INFORMATION**
Staff will present the Expenditure Reports for all programs for the period ending February 29, 2016.

6. STATUS OF ONE-STOP SYSTEM **INFORMATION**
Staff will provide an update on the One-Stop System.

ADJOURNMENT

IF YOU NEED SPECIAL ASSISTANCE TO PARTICIPATE IN THIS MEETING, CALL (714) 480-6500 OR THE TDD AT (714) 834-7163. PLEASE CALL 48 HOURS IN ADVANCE TO ALLOW THE COUNTY TO MAKE REASONABLE ARRANGEMENTS TO ENSURE ACCESSIBILITY TO THIS MEETING.

TO OBTAIN COPIES OF OCWIB COMMITTEE AGENDAS AND ATTACHMENTS VISIT OUR WEBSITE AT: WWW.OCWIB.ORG OR CONTACT THE ORANGE COUNTY WORKFORCE INVESTMENT BOARD ADMINISTRATIVE OFFICE: (714) 480-6500 OR OCWIB@OCCR.OCGOV.COM.

Item #1 – ACTION

**MINUTES
Recommendation Summary
April 14, 2016**

**Orange County Workforce Investment Board
Service Delivery and Performance Committee**

July 9, 2015

1:00PM

**Orange County One-Stop Center
Garden Grove Conference Room
7077 Oranewood Ave.
Garden Grove, CA 92841**

MINUTES

ROLL CALL:

Present:

Alan Woo
Barbara Mason
Buddy Ray
Ernesto Medrano
June Kuehn
Rob Claudio

Guests:

Andrew Smith
Bernie Gilbert
David Baquerizo
Fredrick Reyes
Hector Huezo
Rena Drake
Steven Moraldo

CALL TO ORDER: 1:04 p.m.

1. MINUTES ACTION

The minutes of the April 9, 2015 Service Delivery and Performance Committee were presented for review and approval.

Motion was made to approve the minutes. Rob Claudio motioned for approval. June Kuehn seconded. Buddy Ray abstained. Motion passed.

2. WIA/WIOA TRAINING POLICY ACTION

Staff presented information on the WIA/WIOA Training Policy for review and approval.

Motion was made to approve the recommendations. Buddy Ray motioned for approval. Ernesto Medrano seconded. Motion passed.

- 3. ONE-STOP SYSTEM FUNDING ALLOCATIONS** **ACTION**
Staff presented the One-Stop System funding allocations for review and approval.
- Motion was made to approve the recommendations. Buddy Ray motioned for approval. Rob Claudio seconded. Motion passed.
- 4. WIA PERFORMANCE REPORTS** **INFORMATION**
Staff provided information on the performance reports for WIA Adults and Dislocated Workers, NEG Multi Sector, 25% Dislocated Worker Additional Assistance Project and Health Care, Veteran's Employment-Assistance Program, Senior Community Service Employment Program, Welfare-To-Work Employment Program, OC4Vets, Workforce Innovation Fund and ITAs for the period ending May 31, 2015.
- 5. PROGRAM FUNDING EXPENDITURE REPORTS** **INFORMATION**
Staff provided information on provider expenditures for the period beginning July 1, 2014 through May 31, 2015
- 6. STATUS OF ONE-STOP SYSTEM** **INFORMATION**
Staff provided an update on the relocation of the North Comprehensive One-Stop Center.
- 7. WORKFORCE INNOVATION AND OPPORTUNITY ACT** **INFORMATION**
Staff provided information on implementation of the new legislation.

Meeting adjourned at 2:50 p.m.

Item #2 – ACTION

ONE-STOP FUNDING RECOMMENDATIONS FOR PY 2016-17 Recommendation Summary April 14, 2016

BACKGROUND:

The WIA Comprehensive/Satellite One-Stop Centers and Business Services Request for Proposal (RFP) was released on December 4, 2012. FY 2016-17 is Year 4 of a five year cycle. Current One-Stop Providers include ProPath, Inc. and Pacific Gateway Workforce Investment Network administered by the City of Long Beach. Other providers procured through either the Workforce Services and/or the Employment and Economic Development Services RFPs may also provide ancillary services to support the One-Stop System.

It is important to note that the funding estimates listed below are only projections and may be more or less based on factors including:

- Unspent funds from FY 2015-16
- Funding agency allocations
- Contractor disallowed costs from prior years
- Provider capacity
- System needs
- Timing of funding allocations from funding agencies
- Prior years' performance of providers

Job Seeker Services: Adult and Dislocated Worker funding is used to fund WIOA services to eligible job seekers in the Orange County Development Area. WIOA funding provides employment and training services to assist eligible individuals in finding and qualifying for meaningful employment and to help employers find the skilled workers they need to compete and succeed in business. Service delivery strategies support workers in activities that align with areas of anticipated economic and job growth. **Funding available for FY 2016-17 for Job Seeker Services is anticipated to be approximately \$3,295,000.**

Business Services: Rapid Response funding is used to fund required activities provided by Business Services. Rapid Response is a pro-active, business-focused service that responds to layoffs and plant closings by quickly providing assistance to companies and their affected workers. Rapid Response teams work with employers and employee representatives to minimize disruptions associated with job loss. Rapid Response funding is also intended to provide lay-off aversion services for businesses. Some Adult and Dislocated Worker funds may also be used to supplement Business Service activities. **Rapid Response funding available for FY 2016-17 for Business Services is anticipated to be approximately \$350,000.**

The Senior Community Service Employment Program (SCSEP) is funded through the California Department on Aging. The SCSEP provides job training and work experience for low income adults 55 and older in Orange County. **The amount of anticipated funding for FY 2016-17 is approximately \$100,000 for program operations and \$590,000 for participant wages.**

Vocational Training (VTR) and Work Experience (WEX) program provides job training and work experience activities to enhance and facilitate opportunities for CalWORKS Welfare-to-Work (WtW) customers to find and retain stable employment to become self-sufficient. The clients served in this referral based program frequently have multiple barriers which must be addressed if they are to have successful outcomes. The program provides both vocational training and work experience options. **FY 2016-17 funding from the County of Orange Social Services Agency (SSA) is estimated to be approximately \$480,000.**

Employment Preparation Program (EPP)

The Employment Preparation Program provides Welfare-to-Work participants who may have little or no work history an opportunity to learn soft skills, build workplace confidence and self-esteem through paid employment training in a specific field of choice in the public, private non-profit, or private employment sector. Participants will learn skills through a variety of workshops, one-on-one training, coaching and paid employment training. Upon completion of the program participants will gain employment skills, enhance experience and develop a positive work ethic that will increase their chances to find unsubsidized employment. **FY 2016-17 funding from the County of Orange Social Services Agency (SSA) is estimated to be approximately \$1,800,000.**

OC4VETS

The Orange County Health Care Agency (HCA) received multi-year funding to provide wrap around services to veterans. Funded through Proposition 63, the Mental Health Services Act (MHSA), this innovative project uses multiple strategies to outreach, engage, and ensure veterans' access to needed resources as well as improve collaboration among agencies providing services to veterans. In addition to behavioral health services, veterans who participate in the program work with an employment specialist and a housing specialist and receive a full array of supportive services. **Funding for FY 2016-17 is anticipated to be approximately \$460,540.**

The above funding recommendations are based on best estimates at this point in time. All WIOA Agreements will contain a thirty (30) day termination clause which may be implemented when there are deficiencies in the Contractor's ability to deliver services as outlined in the Statement of Work.

As other funding streams become available, the OCWIB reserves the right to continue to fund the One-Stop System utilizing current providers. However, the OCWIB may incorporate other entities which have submitted a 'fundable' proposal under this RFP, the Workforce Services RFP or the Employment and Economic Development RFP; competitively procure other providers; or fund additional activities that are in the best interest of the OCWIB.

Contracts will be for one year, beginning July 1, 2016 and ending June 30, 2017. All funding recommendations for Program Year 2016-17 are anticipated to be presented to the Orange County Board of Supervisors for approval on or about May 24, 2016.

RECOMMENDATION(S):

1. Comprehensive One-Stop Centers and Business Services Funding Allocations may be allocated as noted below. All amounts are an “up to” amount and agreements may be executed at lesser amounts, or not executed at all contingent upon the above stated factors. Conversely, contracts may be executed at higher amounts as funding requirements change as directed by funding agencies. Said amounts will be commensurate to and will not exceed those issued to the County from said funders.

a. Fund ProPath, Inc. \$6,441,294 for Adult, Dislocated Worker, Rapid Response, SCSEP, OC4VETS and Welfare-to-Work programs.

Job Seeker Services (Adult & Dislocated Worker)	\$ 3,249,036
Business Services (Rapid Response)	\$ 350,000
SCSEP	\$ 690,000
OC4VETS	\$ 460,540
Welfare-to-Work	\$ 1,691,718
TOTAL	\$ 6,441,294

b. Fund Orange County Asian Pacific Islander Community Alliance (OCAPICA) \$588,282 for SSA Welfare to Work Programs - Work Experience, Vocational Training and EPP Services.

2. Direct staff to determine final FY 2016-17 funding allocations within the parameters outlined in Recommendation #1a-b above as well as divide between North, South, and Satellite locations. Funding allocations for final contract(s) will be based upon the following factors:
- (a) Unspent funds from FY 2015-16
 - (b) Funding agency allocations
 - (c) Contractor disallowed costs from prior years
 - (d) Provider capacity
 - (e) System needs
 - (f) Timing of funding allocations from funding agencies
 - (g) Prior years’ performance of providers
3. Without further OCWIB approval, staff may shift funds between funding streams to maximize service provision.
4. If WIOA funds allocated by the State and/or the carry-in from FY 2015-16 is less than or greater than the estimated amounts, authorize staff to adjust allocations based on percentage increases or decreases.
5. Without further OCWIB approval, authorize staff to exercise a cost contingency increase not to exceed a total of ten (10) percent of the contract amounts.
6. If negotiations do not yield a contract with a current Provider, authorize staff to negotiate with other fundable providers as procured through the WIA Comprehensive/Satellite One-Stop Centers and Business Services RFP, the Workforce Services RFP and/or the Employment and Economic Development RFP.

ATTACHMENT(S):

None

Item #3 – ACTION

SUBSCRIPTION WITH FUTUREWORK SYSTEMS Recommendation Summary April 14, 2016

BACKGROUND:

FutureWork Systems is the owner of, and operates Performance Matters Plus, a performance evaluation web-based service designed for reporting, tracking and analyzing the performance of Workforce Innovation and Opportunity Act (WIOA) programs.

WIOA establishes standards for performance measurement and continuous improvement, which demand more than the static reporting offered by the state automated reporting system, CalJOBS. Performance Matters Plus will provide a comprehensive single source for analysis that allows staff to generate required WIOA performance information on underlying causes, trends, and operational insights to support continuous improvement. Performance Matters Plus is designed to:

- Inform policy and practices
- Provide leading indicators of performance (considering lagging WIA/WIOA measures)
- Provide a robust, dynamic platform
- Provide online audit and case management rosters

RECOMMENDATION(S):

Approve funding recommendation for subscription to FutureWork Systems Performance Matters Plus, not to exceed \$46,040.

ATTACHMENT(S):

FutureWork Systems Information

We simplify your reporting... *and can do so much more for CA boards.*

Reporting should never be complicated. Data access should no longer require technical handstands by a single go-to person within an agency. Board members and staff should never have to struggle to get answers to questions about how their workforce programs are performing. Questions should be easily answered. Data should be democratized. Reporting should be single-click access by anyone in your agency. It's just that simple. It's what we deliver to you.

It's time to become data-driven.

WIOA ushers in a new era in workforce development. It's an era where we'll have democratized data access and agencies will move from being solely report-driven and reactionary to more data-driven and evidence-based when making program and policy decisions. Data will play an ever increasing role in the success of the workforce program you deliver to your communities.

CA Boards can now take full advantage of our BI application services.

Your agency can finally have intuitive, instant access to program data in a Web-based business intelligence application to support informed, data-driven program and policy decisions. Program reporting and analysis is quick and easy, accessible to whomever, and made as simple and uncomplicated as possible. This is what we do every day for workforce development clients across the country. **CA boards now have access to a data file from CalJobs that can load directly into our BI application service!**

Performance questions can be answered with a simple click of a mouse and you'll have our entire team available to support your efforts to turn data into actionable intelligence that can positively impact your program success.

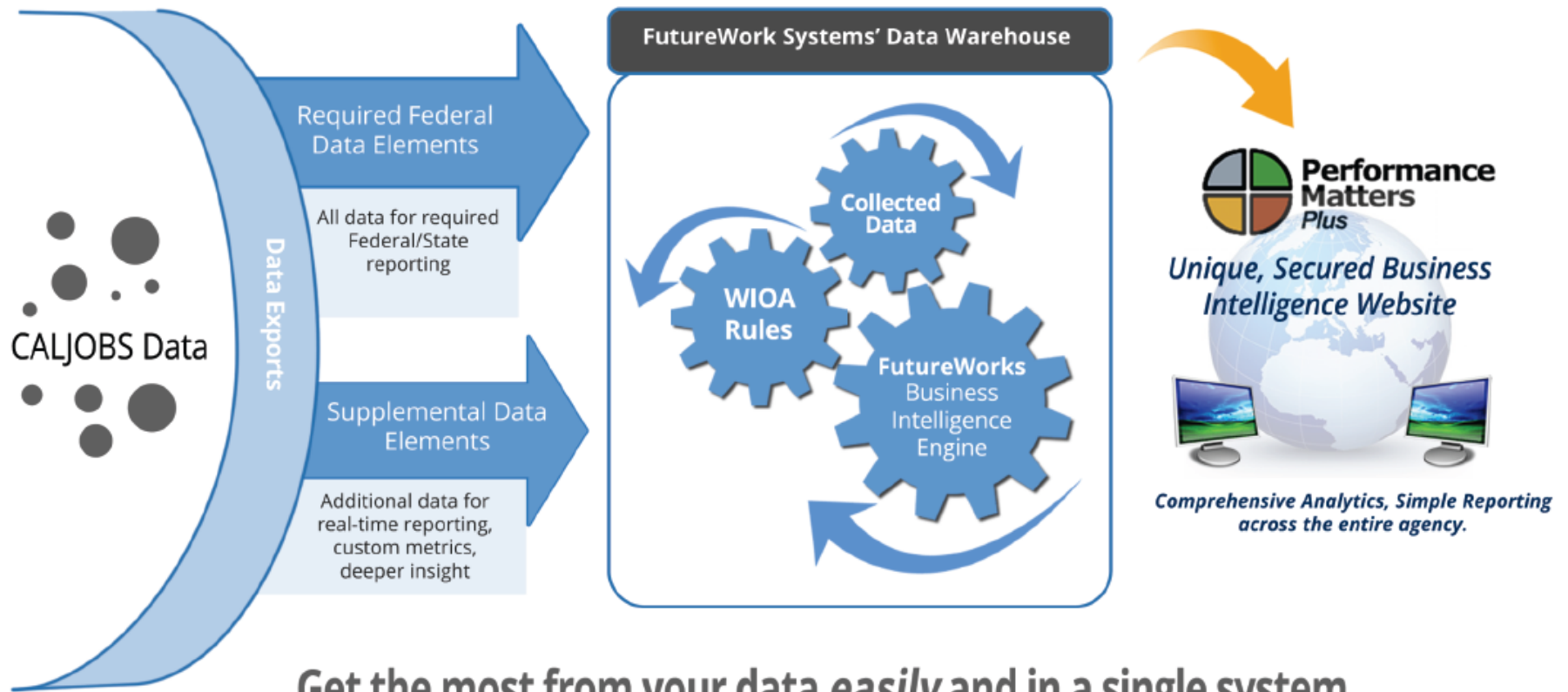
We load your data monthly into a unique BI system just for your board. Your entire agency has simple and intuitive data access for reporting and analysis down to the participant level. And it's all backed by expert technical assistance that's available whenever you need it. It's an all-in-one package designed to help you get the most from your data, simplify reporting needs, become data-driven and, most importantly, improve your performance.

Getting started with us is as simple uploading a data file!

CalJobs currently provides the necessary data dump to your local area that we can load into a custom BI web site for our Workforce Board. In as little as 7 days, we can have your entire team interacting with your data in ways you've never experienced. It's intuitive data access. It's democratized data. You'll just call it easier reporting.

Simplified and Powerful Reporting for CA Boards

Your path to simpler reporting, data-driven decisions, and better program insight and performance



Get the most from your data *easily* and in a single system.

Supplemental data elements may include...

- Status and date of closures
- Wage at placement
- Hours per week working
- Job Title
- Placed Industry Code
- Training Provider
- Completed Training
- Credential
- ...and more if desired.



FutureWork systems

futureworksystems.com

800-448-2266

Item #4 – INFORMATION

WIA PERFORMANCE REPORTS

Recommendation Summary

April 14, 2016

BACKGROUND:

The Service Delivery & Performance Committee routinely reviews performance data to assess overall performance. Staff will present performance reports for all programs as of February 29, 2016.

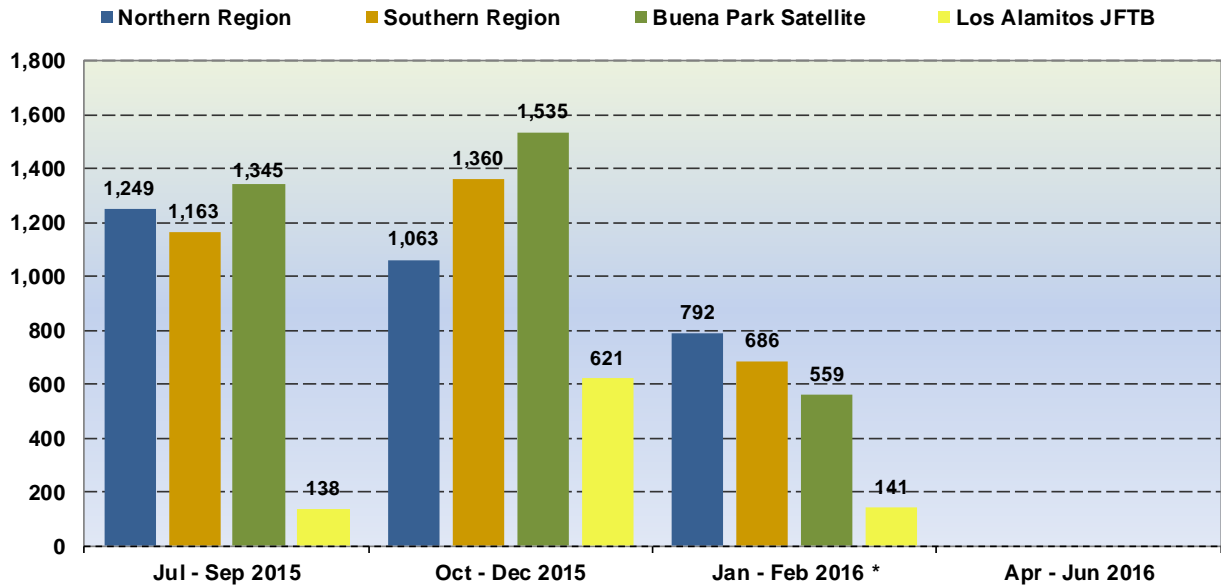
RECOMMENDATION(S):

Received and File

ATTACHMENT(S):

Performance Reports

Orange County WIB
One-Stop System
Universal Services Client Unique Count
Performance Report for PY 2015-16
As of February 29, 2016

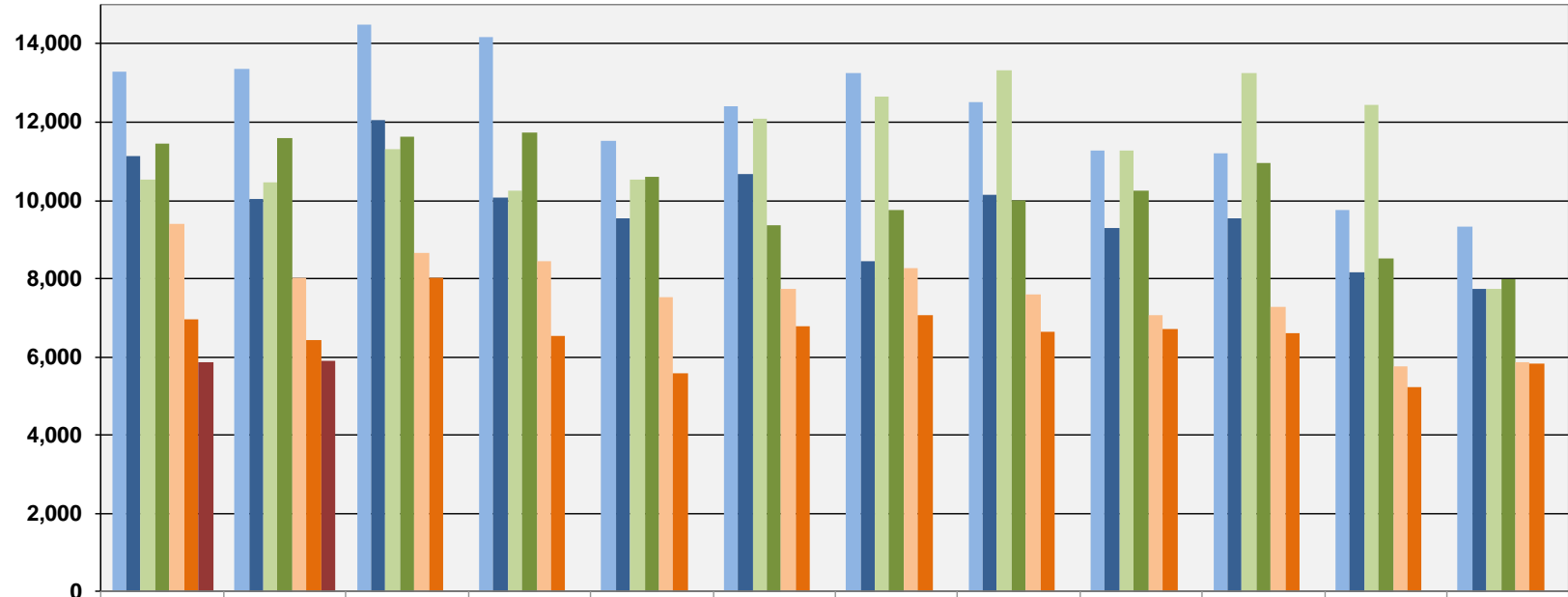


OC One-Stop Centers- Unique Count				
Reporting Period	Northern Region	Southern Region	Buena Park Satellite	Los Alamitos JFTB
Jul - Sep 2015	1,249	1,163	1,345	138
Oct - Dec 2015	1,063	1,360	1,535	621
Jan - Feb 2016 *	792	686	559	141
Apr - Jun 2016	N/A	N/A	N/A	N/A
Total	3,104	3,209	3,439	900

Universal Service Statistics			
PY 2015-16			
July 1, 2015 - February 29, 2016			
Workshops	OC One-Stop Centers		
	Northern Region	Southern Region	Buena Park Satellite
One-Stop Orientation	691	656	238
Networking	361	159	36
Resume	560	408	100
Interviewing	258	232	66
Job Searching	55	256	96
Other Workshops	808	368	168
Total	2,733	2,079	704

* Provider: ProPath, Inc.

Orange County WIB
One-Stop System
Universal Services Client Unique Count
Performance Report for PY 2015-16
As of February 29, 2016



	Jan	Feb	Mar	Apr	May	Jun	Jul	Aug	Sep	Oct	Nov	Dec	Totals
2010	13,287	13,371	14,504	14,171	11,519	12,405	13,240	12,503	11,271	11,191	9,742	9,338	146,542
2011	11,119	10,026	12,039	10,066	9,536	10,668	8,460	10,139	9,292	9,544	8,145	7,733	116,767
2012	10,517	10,468	11,308	10,261	10,520	12,099	12,643	13,327	11,285	13,263	12,457	7,753	135,901
2013	11,447	11,595	11,616	11,744	10,600	9,351	9,745	10,017	10,232	10,963	8,500	7,991	123,801
2014	9,389	8,005	8,654	8,433	7,541	7,732	8,267	7,606	7,067	7,261	5,739	5,858	91,552
2015	6,973	6,417	8,035	6,518	5,575	6,791	7,064	6,627	6,698	6,587	5,237	5,839	78,361
2016	5,864	5,896											11,760

Orange County WIB
WIA Adult and Dislocated Worker
Preliminary Final Performance Report for PY 2015-16
As of February 29, 2016

ADULT

BW Data as of 06/30/15 with Supplemental Data

(*Exiters from 10/01/14 to 03/31/15)

(**Exiters from 04/01/14 to 09/30/14)

	NORTHERN REGION			SOUTHERN REGION			BUENA PARK SATELLITE			SAN JUAN CAPISTRANO SATELLITE			GOODWILL OF ORANGE COUNTY			OCWB TOTAL		
	Actual	Contract Plan (as of 02/29/16)	% Achieved	Actual	Contract Plan (as of 02/29/16)	% Achieved	Actual	Contract Plan (as of 02/29/16)	% Achieved	Actual	Contract Plan (as of 02/29/16)	% Achieved	Actual	Contract Plan (as of 02/29/16)	% Achieved	Actual	State Plan	% Achieved
	163			111			77			60			---			402		
Common Performance Measures																		
*Entered Employment Rate	79.14%	80.00%	98.93%	86.27%	80.00%	107.84%	85.71%	80.00%	107.14%	76.67%	80.00%	95.83%	---	80.00%	---	81.84%	75.00%	109.12%
**Employment Retention Rate	88.35%	84.00%	105.18%	99.10%	84.00%	117.98%	90.00%	84.00%	107.14%	96.15%	84.00%	114.47%	---	84.00%	---	93.67%	82.00%	114.23%
**Average Earnings	\$14,635.03	\$16,000.00	91.47%	\$18,294.00	\$16,000.00	114.34%	\$10,666.87	\$16,000.00	66.67%	\$12,710.18	\$16,000.00	79.44%	---	\$16,000.00	---	\$14,997.69	\$15,450.00	97.07%

(Cumulative, 07/01/15 to 02/29/16)

	NORTHERN REGION			SOUTHERN REGION			BUENA PARK SATELLITE			SAN JUAN CAPISTRANO SATELLITE			GOODWILL OF ORANGE COUNTY			OCWB TOTAL		
	Actual	Contract Plan (as of 02/29/16)	% Achieved	Actual	Contract Plan (as of 02/29/16)	% Achieved	Actual	Contract Plan (as of 02/29/16)	% Achieved	Actual	Contract Plan (as of 02/29/16)	% Achieved	Actual	Contract Plan (as of 02/29/16)	% Achieved	Actual	Contract Plan (as of 02/29/16)	% Achieved
Total Participants Registered	316			331			101			7			55			810		
Carried In	149			175			75			7			0			406		
New Registrants	167	160	104.38%	156	160	97.50%	26	27	96.30%	0	0	---	55	44	125.00%	404	391	103.32%
Exited	129	128	100.78%	143	138	103.62%	64	62	103.23%	5	5	100.00%	1	0	---	342	333	102.70%

DISLOCATED WORKER

BW Data as of 06/30/15 with Supplemental Data

(*Exiters from 10/01/14 to 03/31/15)

(**Exiters from 04/01/14 to 09/30/14)

	NORTHERN REGION			SOUTHERN REGION			BUENA PARK SATELLITE			SAN JUAN CAPISTRANO SATELLITE			PGWIN			OCWB TOTAL		
	Actual	Contract Plan (as of 02/29/16)	% Achieved	Actual	Contract Plan (as of 02/29/16)	% Achieved	Actual	Contract Plan (as of 02/29/16)	% Achieved	Actual	Contract Plan (as of 02/29/16)	% Achieved	Actual	Contract Plan (as of 02/29/16)	% Achieved	Actual	State Plan	% Achieved
	202			131			127			68			0			510		
Common Performance Measures																		
*Entered Employment Rate	85.15%	82.00%	103.84%	87.10%	82.00%	106.22%	81.10%	82.00%	98.91%	80.70%	82.00%	98.42%	---	82.00%	---	84.12%	79.00%	106.48%
**Employment Retention Rate	86.23%	88.00%	97.99%	96.18%	88.00%	109.30%	83.93%	88.00%	95.37%	97.06%	88.00%	110.29%	---	88.00%	---	89.96%	85.00%	105.83%
**Average Earnings	\$21,728.98	\$19,800.00	109.74%	\$27,424.41	\$19,800.00	138.51%	\$19,270.21	\$19,800.00	97.32%	\$24,303.92	\$19,800.00	122.75%	---	\$19,800.00	---	\$23,255.69	\$18,600.00	125.03%

(Cumulative, 07/01/15 to 12/31/15)

	NORTHERN REGION			SOUTHERN REGION			BUENA PARK SATELLITE			SAN JUAN CAPISTRANO SATELLITE			PGWIN			OCWB TOTAL		
	Actual	Contract Plan (as of 02/29/16)	% Achieved	Actual	Contract Plan (as of 02/29/16)	% Achieved	Actual	Contract Plan (as of 02/29/16)	% Achieved	Actual	Contract Plan (as of 02/29/16)	% Achieved	Actual	Contract Plan (as of 02/29/16)	% Achieved	Actual	Contract Plan (as of 02/29/16)	% Achieved
Total Participants Registered	441			440			160			6			39			1086		
Carried In	177			227			105			6			0			515		
New Registrants	264	211	125.12%	213	211	100.95%	55	55	100.00%	0	0	---	39	33	118.18%	571	510	111.96%
Exited	227	122	186.07%	184	182	101.10%	88	85	103.53%	5	5	100.00%	2	0	---	506	394	128.43%

Data Source: State CalJOBS System

Legend:

- 79% and Below
- 80% - 100%
- Above 100%

Total Participants Registered

- Below 100%
- 100% and Above

THE NATIONAL EMERGENCY GRANT (NEG) HEALTH CARE

The Orange County Workforce Investment Board (OCWIB) in partnership with the Southeast Los Angeles County Workforce Investment Board (SELACO) was awarded a National Emergency Grant/Dislocated Worker Training to provide health care training that leads to industry-valued credentials and work-based learning activities. The goal of this project is to fill critical health care workforce skill gaps by creating opportunities for Orange County job seekers to earn industry-valued credentials and/or developing on-the-job training, internship, and other work-based learning modalities that expedite job placement in entry and middle-level skilled health care occupations.

SELACO is the lead applicant and fiscal administrator of the grant, who identified the OCWIB as a regional partner on October 31, 2013. SELACO provides services in the Los Angeles region through their One-Stop System and OCWIB provides services in the Orange County region through the Orange County One-Stop System. The grant term is January 1, 2014 through March 31, 2016. On January 9, 2015, the Executive Committee approved staff recommendation to reassign the project to Pacific Gateway Workforce Investment Network (PGWIN), an eligible and procured Contractor. PGWIN is currently implementing the project.

Orange County WIB
National Emergency Grant
Health Care
Performance Report for PY 2015-16
As of February 29, 2016

Grant Term - 07/01/15 to 03/31/16
(Cumulative, 07/01/15 to 02/29/16)

	PGWIN		
	Actual	Contract Plan <i>(thru 2/29/16)</i>	% Achieved
Total Participants Served	47	44	106.82%
Training Services	36	44	81.82%
Exits	33	42	78.57%
Entered Employment Rate	76%	84%	90.19%

Data Source: State CalJOBS System

Legend

- Below 100%
- 100% and Above

VETERAN'S EMPLOYMENT-ASSISTANCE PROGRAM (VEAP) – 7th GRANT

Orange County was awarded \$444,444 by the California Employment Development Department (EDD) to offer services targeted to meet veterans' unique needs and occupational goals, with an emphasis on those who recently returned to civilian life. This is the seventh VEAP grant awarded to Orange County. The grant term is June 1, 2015 through December 31, 2016. The Project helps prepare veterans for careers in a variety of industries through education and employment assistance. The Project serves all of Orange County as well as veterans referred from Los Angeles County. Veterans are able to access training, support services, and job referrals unique to their skillsets and career goals.

Orange County WIB Recently Separated Veterans Program – 7th Grant Performance Report for PY 2015-16 *As of February 29, 2016*

Grant Term - 06/01/15 to 12/31/16
(Cumulative, 06/01/15 to 02/29/16)

ADULT (15 Percent)

	PROPATH, INC.			PGWIN			OCWIB TOTAL		
	Actual	Contract Plan (thru 02/29/16)	% Achieved	Actual	Contract Plan (thru 02/29/16)	% Achieved	Actual	Contract Plan (thru 02/29/16)	% Achieved
Total Participants Served	21	20	105.00%	24	20	120.00%	45	40	112.50%
Training	7	20	35.00%	20	20	100.00%	27	40	67.50%
Training Completion	5	2	250.00%	7	2	350.00%	12	4	300.00%

DISLOCATED WORKER (25 Percent)

	PROPATH, INC.			PGWIN			OCWIB TOTAL		
	Actual	Contract Plan (thru 02/29/16)	% Achieved	Actual	Contract Plan (thru 02/29/16)	% Achieved	Actual	Contract Plan (thru 02/29/16)	% Achieved
Total Participants Served	18	20	90.00%	24	20	120.00%	42	40	105.00%
Training	7	20	35.00%	18	20	90.00%	25	40	62.50%
Training Completion	3	2	150.00%	3	2	150.00%	6	4	150.00%

Data Source: State CalJOBS System

Legend:
■ Below 100%
■ 100% and Above

SENIOR COMMUNITY SERVICE EMPLOYMENT PROGRAM (SCSEP)

The SCSEP offers low income older workers paid community service and training opportunities. The goal of the program is to help seniors become employable and to obtain unsubsidized employment.

Orange County WIB Senior Community Service Employment Program Performance Report for PY 2015-16 *As of February 29, 2016*

Grant Term: 07/01/15 to 06/30/16
(Cumulative, 07/01/14 to 02/29/16)

Measure	PROPATH, INC.			OCWIB TOTAL		
	Actual	Contract Plan	% Achieved	Actual	State Plan	% Achieved
Enrollments	60	65	92.31%	60	62	96.77%

PERFORMANCE MEASURES

(*Exiters from 04/01/15 to 12/31/15)
(**Exiters from 07/01/14 to 03/31/15)

	PROPATH, INC.			OCWIB TOTAL		
	Actual	Contract Plan	% Achieved	Actual	State Plan	% Achieved
Service Level	130.60%	157.40%	82.97%	130.60%	155.40%	84.04%
Community Service	71.70%	81.70%	87.76%	71.70%	79.70%	89.96%
* Entered Employment	50.00%	39.80%	125.63%	50.00%	38.60%	129.53%
**Employment Retention	66.70%	75.70%	88.11%	66.70%	73.70%	90.50%
**Average Earnings	\$7,350.00	\$8,867	82.89%	\$7,350.00	\$8,667	84.80%
Service to Most-in-Need	2.30	2.57	89.49%	2.30	2.53	90.91%

Data Source: SPARQ System

Legend:

- 79% and Below
- 80% - 100%
- Above 100%

Enrollments Legend:

- Below 100%
- 100% and Above

WELFARE-TO-WORK EMPLOYMENT PROGRAM

The Orange County Social Services Agency (SSA) administers several different Welfare-to-Work Employment Programs. These Welfare-to-Work Activities mandate that CalWORKs recipients meet established work requirements with an end goal of unsubsidized employment. The clients served in these programs frequently have multiple barriers which must be addressed if they are to have successful outcomes. Program is referral based.

- **Vocational Training (VTR)**

VTR is a temporary, transitional, and short-term vocational educational activity, not to exceed twelve (12) months, to prepare participants for unsubsidized employment in a specific trade, occupation, or vocation.

- **Work Experience (WEX)**

The participant gains exposure to the working world and its requirements through a planned, structured learning experience that occurs over a twelve-week period. During this time, 100% wage reimbursement is provided directly to the participant.

- **Employment Preparation Program (EPP)**

The participant gains exposure to the working world and its requirements through a planned, structured learning experience in a public, non-profit or private organization that occurs over a six-month period. During this time, 100% of the wage is paid directly to the participant.

Orange County WIB
 SSA Work Experience (WEX) and Vocational Training (VTR) Program
 Performance Report for PY 2015-16
As of February 29, 2016

Grant Term - 07/01/15 to 06/30/16
 (Cumulative, 07/01/15 to 02/29/16)

WORK EXPERIENCE (WEX)

	OCAPICA			OCWIB TOTAL		
	Actual	Contract Plan (thru 6/30/16)	% Achieved	Actual	M O U (thru 06/30/16)	% Achieved
Total Participants Served (Placed in WEX Assignments)	32					
Carried In (Already in WEX Assignment)	5			5		
New Enrollments (Placed in WEX assignment)	27	70	38.57%	27	67	40.30%
Assignment Rate	84.4%	83.0%	101.66%	84.4%	80.0%	105.47%
Completion Rate	80.0%	73.0%	109.59%	80.0%	70.0%	114.29%
Employment Rate	75.0%	63.0%	119.05%	75.0%	60.0%	125.00%

VOCATIONAL TRAINING (VTR)

	OCAPICA			OCWIB TOTAL		
	Actual	Contract Plan (thru 6/30/16)	% Achieved	Actual	M O U (thru 06/30/16)	% Achieved
Total Participants Served (Placed in WEX Assignments)	22					
Carried In (Already in WEX Assignment)	5			5		
New Enrollments (Placed in WEX assignment)	17	33	51.52%	17	30	56.67%
Assignment Rate	77.3%	83.0%	93.10%	77.3%	80.0%	96.59%
Completion Rate	54.5%	73.0%	74.72%	54.5%	70.0%	77.92%
Employment Rate	83.3%	63.0%	132.28%	83.3%	60.0%	138.89%

Data Source: Provider's Monthly Report

Legend:
■ Below 100%
■ 100% and Above

Orange County WIB
 SSA Employment Preparation Program (EPP)
 Performance Report for PY 2015-16
 As of February 29, 2016

Grant Term - 07/01/15 to 06/30/16
 (Cumulative, 07/01/15 to 02/29/16)

	OCAPICA			OCWIB TOTAL		
	Actual	Contract Plan (thru 6/30/16)	% Achieved	Actual	M O U (thru 06/30/16)	% Achieved
Total Participants Served	211					
Carried In (Already in WEX Assignment)	91			91		
New Enrollments (Placed in WEX assignment)	120	190	63.16%	120	187	64.17%
Assignment Rate	76.9%	83.0%	92.68%	76.9%	80.0%	96.15%
Completion Rate	80.9%	73.0%	110.85%	80.9%	70.0%	115.60%

Data Source: Provider's Monthly Report

Legend:
■ Below 100%
■ 100% and Above

OC4VETS PROJECT

The Orange County Health Care Agency (HCA) has been approved for a Mental Health Services Act (MHSA) funded innovation project, the OC4VETS. Veterans have been identified as a sub-group (culture) that has existing barriers to accessing behavioral health care. This project intends to use multiple strategies to outreach, engage, and ensure veterans' access to needed resources as well as improve collaboration among agencies providing services to veterans. With HCA providing funding for the project, veterans who participate in the program are given job transition and job development support in addition to housing assistance and other supportive services.

Orange County WIB
OC4Vets
Performance Report for PY 2015-16
As of February 29, 2016

Project Duration - 11/01/11 to 02/29/16
(Cumulative, 11/01/11 to 02/29/16)

PROPATH, INC.			
	Actual	Contract Plan (thru 2/29/16)	% Achieved
Referrals Received from HCA	642		
Total Participants Served	537		
Job Support/Job Development	93.11%	85%	109.54%
Housing Assistance	81.38%	70%	116.25%
Other Supportive Services	90.13%	75%	120.17%
Average Wage	\$14.39	\$9.00	159.89%

PARTICIPANT CHARACTERISTICS	
Homeless	275
Disabled	211
Basic Literacy Skills Deficient	0
Offender	63
Limited English	4

Data Source: State CalJOBS System

Legend:

- Below 100%
- 100% and Above

INDIVIDUAL TRAINING ACCOUNT (ITA) PERFORMANCE REPORT

The County contracts with State-approved post-secondary educational and vocational schools to provide occupational skills training to participants referred by the One-Stop Centers. The State of California maintains the Eligible Training Provider List (ETPL) which lists training providers that meet specific accreditation requirements. The OCWIB selects local training providers listed on the ETPL to provide training services in demand occupations and lists them on the OCWIB Approved Training Partner Directory (ATPD). An Individual Training Account (ITA) is established for each participant enrolled in training. On a quarterly and annual basis, ATPD training providers' ITA activities are evaluated under specific performance criteria including completion rate, Entered Employment Rate (EER), Training-Related Employment Rate (TRER) and Training-Related Average Hourly Wage (TRAHW).

Orange County WIB Individual Training Accounts (ITA) Performance Report for PY 2015-16 As of February 29, 2016

Exiters from 10/01/14 to 02/29/16

School	Course	Exiters	Completed	Completion Rate	Entered Employment	Entered Employment Rate	Training-Related Employment	Training-Related Employment Rate	Training-Related Average Wage
California Career School	Commercial Truck and Bus Driver	5	5	100.00%	5	100.00%	4	80.00%	\$11.16
California Employers Association	Professional Edge	85	78	91.76%	57	67.06%	28	49.12%	\$22.60
California Truck Driving Academy	Class A/B Truck Driver	19	16	84.21%	17	89.47%	15	88.24%	\$17.67
Healing Hands School	Holistic Health Practitioner	6	5	83.33%	5	83.33%	4	80.00%	\$29.17
Healthstaff Training Institute	Certified Drug and Alcohol Counselor	5	4	80.00%	5	100.00%	5	100.00%	\$18.92
New Horizons Learning Center of Southern California	Adobe Cert Expert Web Specialist	9	8	88.89%	7	77.78%	3	42.86%	\$19.00
	Cisco Certified Network Associate with CompTIA Network+	5	4	80.00%	5	100.00%	4	80.00%	\$12.25
	Microsoft Certified Solutions Associate (MCSA) Microsoft Windows Server Junior Server Administrator	5	3	60.00%	5	100.00%	4	80.00%	\$16.69
	Microsoft Certified Technology Specialist (MCTS) Microsoft Windows Junior Server Admin	6	4	66.67%	5	83.33%	4	80.00%	\$27.15
	Six Sigma Black Belt with Project Management	6	5	83.33%	5	83.33%	5	100.00%	\$53.54
	Six Sigma Lean Black Belt with Project Management	18	18	100.00%	17	94.44%	9	52.94%	\$44.82
QPE Technical Institute	Manufacturing Technician	12	12	100.00%	6	50.00%	3	50.00%	\$19.17
Santiago Canyon College	General Electrician	11	2	18.18%	10	90.91%	10	100.00%	\$13.10
Southern California Institute of Technology	Accounting Specialist	6	5	83.33%	5	83.33%	2	40.00%	\$29.00
UC Irvine Extension	Human Resources Management	11	2	18.18%	9	81.82%	6	66.67%	\$21.66
	Human Resources Management (Online)	5	3	60.00%	4	80.00%	3	75.00%	\$14.16
	Paralegal	7	4	57.14%	6	85.71%	5	83.33%	\$24.38
	Project Management	18	13	72.22%	18	100.00%	5	27.78%	\$38.28
OCWIB TOTAL		239	191	79.92%	191	79.92%	119	62.30%	\$27.30
OCWIB TOTAL OVERALL		492	370	75.20%	384	78.05%	220	57.29%	\$26.50

Performance Goal:

Entered Employment Rate: 75%

Training-Related Employment Rate: 75%

Training-Related Average Hourly Wage: \$15.25

Legend:

■ Below Performance Goal

■ Above Performance Goal

Data Source: State CalJOBS System

Item #5 - INFORMATION

PROGRAM FUNDING EXPENDITURE REPORTS
Recommendation Summary
April 14, 2016

BACKGROUND:

The Service Delivery & Performance Committee routinely reviews provider expenditures to assess overall program expenditures. Expenditure data is presented for the period beginning July 1, 2016 through February 29, 2016.

RECOMMENDATION(S):

Receive and File

ATTACHMENT(S):

WIOA Expenditure Report

Service Delivery & Performance
Annual Expenditure Report FY 2015/16
Through February 29, 2016
WIOA

	Budget	Invoices Received			Current Balance
		Through	Expenses	%	
Rescare					
Adult North	640,209.00	01/31/16	529,910.41	82.77%	110,298.59
Adult Satellite	238,597.00	01/31/16	171,260.08	71.78%	67,336.92
Adult South	621,596.00	01/31/16	418,682.60	67.36%	202,913.40
Adult BS	20,800.00	12/31/15	2,946.59	14.17%	17,853.41
Adult Vets-JFTB	25,695.00	12/31/15	22,708.97	88.38%	2,986.03
DW North	822,723.00	01/31/16	699,527.76	85.03%	123,195.24
DW Satellite	262,275.00	01/31/16	229,565.83	87.53%	32,709.17
DW South	761,847.00	01/31/16	649,290.06	85.23%	112,556.94
DW BS	157,819.00	12/31/15	131,183.31	83.12%	26,635.69
DW Vets-JFTB	47,813.00	12/31/15	37,001.11	77.39%	10,811.89
SCSEP	321,152.00	12/31/15	272,390.08	84.82%	48,761.92
BS RR	206,331.00	12/31/15	205,273.56	99.49%	1,057.44
OC4Vets	202,706.00	12/31/15	137,866.88	68.01%	64,839.12
WIF	34,690.00	12/31/15	32,628.59	94.06%	2,061.41
NEG 25%	112,302.00	12/31/15	88,163.17	78.51%	24,138.83
Total	4,476,555.00		3,628,399.00	81.05%	848,156.00
Rescare					
VEAP 7 - Adult 15%	80,000.00	02/29/16	13,855.96	17.32%	66,144.04
VEAP 7 - DW 25%	80,000.00	02/29/16	13,492.51	16.87%	66,507.49
Total	160,000.00		27,348.47	17.09%	132,651.53
ProPath, Inc					
Adult North	320,000.00	02/29/16	97,983.09	30.62%	222,016.91
Adult Satellite	120,000.00	02/29/16	29,506.11	24.59%	90,493.89
Adult South	320,000.00	02/29/16	81,752.21	25.55%	238,247.79
Adult BS	70,000.00	02/29/16	15,470.00	22.10%	54,530.00
Adult Vets-JFTB	20,000.00	02/29/16	6,975.47	34.88%	13,024.53
DW North	460,000.00	02/29/16	166,299.99	36.15%	293,700.01
DW Satellite	180,000.00	02/29/16	39,191.18	21.77%	140,808.82
DW South	460,000.00	02/29/16	115,467.20	25.10%	344,532.80
DW BS	200,000.00	02/29/16	33,131.00	16.57%	166,869.00
DW Vets-JFTB	30,000.00	02/29/16	11,771.34	39.24%	18,228.66
SCSEP	340,000.00	02/29/16	120,355.18	35.40%	219,644.82
BS RR	300,000.00	02/29/16	56,014.84	18.67%	243,985.16
OC4Vets	180,000.00	02/29/16	44,241.66	24.58%	135,758.34
VEAP 7 - Adult 15%	60,000.00	02/29/16	15,465.44	25.78%	44,534.56
VEAP 7 - DW 25%	60,000.00	02/29/16	15,321.47	25.54%	44,678.53
Total	3,120,000.00		848,946.18	27.21%	2,271,053.82
OCBC					
Adult	89,100.00	02/29/16	44,636.27	50.10%	44,463.73
Youth	38,610.00	02/29/16	19,342.40	50.10%	19,267.60
Dislocated Worker	89,100.00	02/29/16	44,636.27	50.10%	44,463.73
Rapid Response	47,520.00	02/29/16	23,806.02	50.10%	23,713.98
Workforce General Fund	32,670.00	02/29/16	16,366.59	50.10%	16,303.41
RICO II Talent Pipeline	31,750.00	02/29/16	29,347.07	92.43%	2,402.93
RICO II Sustainability	31,750.00	02/29/16	29,347.07	92.43%	2,402.93
Total	360,500.00		207,481.69	57.55%	153,018.31
PGWIN					
VEAP 7 - Adult 15%	100,000.00	02/29/16	47,555.89	47.56%	52,444.11
VEAP 7 - DW 25%	100,000.00	02/29/16	42,252.75	42.25%	57,747.25
Total	200,000.00		89,808.64	44.90%	110,191.36
PGWIN					
Adult	36,529.00	02/29/16	9,310.46	25.49%	27,218.54
DW	150,396.00	02/29/16	52,735.77	35.06%	97,660.23
Adult / NEG-HC	64,226.00	02/29/16	-	0.00%	64,226.00
DW / NEG-HC	33,870.00	02/29/16	14,799.21	43.69%	19,070.79
RICO II / Talent Pipeline	78,750.00	02/29/16	31,434.93	39.92%	47,315.07
RICO II / Sustainability	36,229.00	02/29/16	10,410.51	28.74%	25,818.49
Total	400,000.00		118,690.88	29.67%	281,309.12
Goodwill Industries of O.C.					
Professional Services	200,000.00	02/29/16	106,080.54	53.04%	93,919.46
Total	200,000.00		106,080.54	53.04%	93,919.46
Goodwill Industries of O.C.					
EEDS - LEAP	361,674.00	02/29/16	18,049.31	4.99%	343,624.69
Total	361,674.00		18,049.31	4.99%	343,624.69
OCAPICA					
SSA - EPP	1,800,000.00	02/29/16	1,158,222.06	64.35%	641,777.94
SSA - VTR	70,000.00	02/29/16	35,162.60	50.23%	34,837.40
SSA - WEX	410,000.00	02/29/16	155,036.49	37.81%	254,963.51
Total	2,280,000.00		1,348,421.15	59.14%	931,578.85

Item #6 - INFORMATION

STATUS OF ONE-STOP SYSTEM

Recommendation Summary

April 14, 2016

BACKGROUND:

Staff will provide a status of the One-Stop system including the relocation of the Comprehensive One-Stop Center in Irvine.

RECOMMENDATION(S):

Receive and File

ATTACHMENT(S):

None